

Correlation between amygdala volumes and serum levels of BDNF and NGF as a neurobiological marker for diagnosis and/or treatment response in adolescents with bipolar disorder

Abstract

Background: The amygdala is repeatedly implicated as a critical component of the neurocircuitry regulating emotional valence. Studies have frequently reported reduced amygdala volumes in children and adolescents with bipolar disorder (BD). Brain derived neurotrophic factor (BDNF) and nerve growth factor (NGF) play critical roles in growth, differentiation, maintenance, and synaptic plasticity of neuronal systems in adolescent brain development. The aim of the present study was to assess amygdala volumes and its correlation with serum levels of NGF and BDNF in euthymic adolescents with BD and healthy controls.

Methods: Using structural MRI, we compared the amygdala volumes of 30 euthymic subjects with BD with 23 healthy control subjects aged between 13 and 19 years during a naturalistic clinical follow-up. The boundaries of the amygdala were outlined manually. Serum BDNF and NGF levels were measured using sandwich-ELISA and compared between the study groups.

Results: The right or left amygdala volume did not differ between the study groups. The right and left amygdala volumes were highly correlated with levels of BDNF in the combined BD group and the valproate-treated group. Both R and L amygdala volumes were correlated with BDNF levels in healthy controls. The left amygdala volumes were correlated with BDNF levels in the lithium-treated group.

Limitations: This cross-sectional study cannot inform longitudinal changes in brain structure. Further studies with larger sample sizes are needed to improve reliability.

Conclusions: The correlations between amygdala volumes and BDNF levels might be an early neuro-marker for diagnosis and/or treatment response in adolescents with BD.

1. Introduction

BD causes significant morbidity during childhood and adolescence (Wilke et al., 2004). Determining the developmental neurobiological abnormalities in different age groups may lead to the identification of age-specific disease biomarkers and clarify whether childhood, adolescent, and adult types of BD are pathophysiologically similar.

Recent neuroimaging studies have reported that BD involves dysfunction within the anterior limbic network, a group of interconnected brain regions that include portions of the prefrontal cortex,

striatum, thalamus, and amygdala. In pathophysiological research on pediatric and adult BD, particular focus has been on the amygdala. The amygdala is a region of specialized nuclei in the medial temporal lobe, and is a critical component of the neurocircuitry that regulates emotional valence. Both a significantly reduced amygdala volume and a significantly increased amygdala response to emotional stimuli have been reported in a sample of adolescents with BD relative to healthy controls (Kalmar et al., 2009). Thus, the presence of structural abnormalities of the amygdala during childhood and adolescence in those with BD provides further evidence that the amygdala might play a crucial role early in the disorder.

Most of the studies in adults with BD have shown amygdala volume increases, whereas studies in children and adolescents

^a Corresponding author. Tel.: þ902324123564.

E-mail address: neslihan.emiroglu@deu.edu.tr (F.N. Inal-Emiroglu).

have reported only amygdala volume reductions. A meta-analysis of structural magnetic resonance imaging (MRI) studies of amygdala volumes reported that amygdala volumes were significantly reduced in children and adolescents with BD compared with healthy controls, whereas there was no significant difference in the amygdala volumes of adults with BD compared with healthy controls (Pfeifer et al., 2008). Another meta-analysis found that children and adolescents with BD had significantly smaller left amygdala volumes relative to the controls, whereas adults with BD showed a trend towards increases in left amygdala volume (Hajek et al., 2009).

A longitudinal, within-subject design study has demonstrated that the decrease in amygdala volume persisted when a second evaluation was made two years after the first evaluation for BD occurring during adolescence and young adulthood (Blumberg et al., 2005). Another prospective study compared adolescents with BD, adolescents with ADHD, and healthy controls. They found after following them for 12 months that adolescents with BD did not exhibit abnormalities in amygdala volumes at the onset of manic illness, but failed to exhibit the increases in amygdala volumes seen in the other groups at the end of the follow-up period (Bitter et al., 2011).

Longitudinal and cross-sectional brain imaging studies have revealed a number of structural abnormalities of the amygdala in children and adolescents with BD. These abnormalities include reductions in the volumes of the amygdala as determined by an MRI. Reduced neuronal and glial densities were also found in post-mortem brains of subjects with BD. The survival of appropriate numbers of synaptically connected neurons and supporting glial cells depend on neurotrophic factors. Separation of astroglial cells from cortical neurons in culture medium leads to neuronal death, which can be suppressed by neurotrophic factors such as BDNF (Ohgoh et al., 1998; Rajkowska, 2002). Neurotrophic factors such as BDNF and NGF play critical roles in growth, differentiation, maintenance, and synaptic plasticity in neuronal systems, which are more relevant during adolescence (Sendtner et al., 2000).

BDNF has been predominantly assessed as a possible biomarker of several mood disorders (Hashimoto, 2010; Fernandes et al., 2011). NGF, another member of the neurotrophin family has a relevant role in neurogenesis, neuronal plasticity, and signaling by different cells of the human immune system (Berry et al., 2012). Studies have shown lower serum BDNF and NGF concentrations in mood disorders including BD (Lin, 2009; Barbosa et al., 2011). A decrease in the serum levels of three major neurotrophic factors (BDNF, NGF, and GDNF) was shown in depressive adolescents (Pallavi et al., 2013). The observed structural abnormalities in the brains of adolescents with BD have been linked to neurotrophic factors such as BDNF and NGF function, suggesting important roles for BDNF and NGF in this disorder.

To date, no study has been carried out to examine the relationship between neurotrophic factors and structural differences in adolescents with BD. Longitudinal studies suggested that decrease in amygdala volumes persist during adolescence and young adulthood in BD and it is not known whether changes in the expression levels of BDNF and NGF might lead to decrease in the amygdala volumes of adolescents with BD. We aimed to examine the differences in amygdala volumes and correlations between amygdala volumes and serum NGF and BDNF levels in euthymic adolescents with BD and healthy controls.

2. Methods

2.1. Inclusion of subjects

The study included 30 adolescents with DSM-IV diagnosis of BD, aged 13–19 years. They were patients at the Dokuz Eylul University

Medical School, Department of Child and Adolescent Psychiatry, who were already in a naturalistic clinical follow-up between June 2008 and September 2013. The study was approved by Dokuz Eylul University Local Ethics Committee. Written informed consents were obtained from parents. Diagnoses were made using Kiddie and Young Adult Schedule for Affective Disorders and Schizophrenia Present and Lifetime Version (K-SADS-PL). This interview was translated into Turkish, and a reliability and validity study was conducted previously (Gökler et al., 2004). The affective module of Washington University at St. Louis Kiddie and Young Adult Schedule for Affective Disorders and Schizophrenia—Present State and Lifetime (WASH-U-K-SADS) was also used. This interview was also translated into Turkish (Inal-Emiroglu et al., 2008). Diagnosis was made according to the DSM-IV, and information from the K-SADS-PL and the affective module of WASH-U-K-SADS were used to obtain detailed mood symptomatology and chronology. In the patient group, the exclusion criteria were: history of seizures; severe head injury that causes loss of consciousness for more than 10 min; history of psychostimulant, antipsychotic, or antidepressant usage within three months before diagnosis; history of pregnancy, schizophrenia, pervasive developmental disorders, or mental retardation (Total IQ \leq 70); the presence of a chronic medical disorder; or ongoing substance misuse. Patients who had comorbid anxiety or a disruptive behavior disorder and patients who were receiving medical treatment were included.

The comparison group consisted of 23 adolescents aged between 13 and 19 years without any psychiatric diagnosis or substance abuse, as assessed by the K-SADS-PL. They were selected from the epidemiologic catchment area of the university. In the control group, exclusion criteria were: the presence of a psychiatric disorder in first-degree relatives; mental retardation (IQ \leq 70); a chronic medical condition; history of seizure, or severe head injury that causes loss of consciousness for more than 10 min.

2.2. Medication treatment of patients

At the time of MRI scanning, 11 participants were taking lithium (mean serum lithium level: 0.78 \pm 0.25; range: 0.24–1.10 mmol/L; two values missing). The mean duration of lithium treatment was 2.4 \pm 1.37 years (range: 0.5–3 years), with 9 receiving concomitant treatment with a second-generation antipsychotic (SGA: risperidone, olanzapine, quetiapine, or aripiprazole). Sixteen participants were receiving sodium valproate (VPA) (mean serum VPA level: 77.7 \pm 15.2; range: 34–97 mmol/L). The mean duration of VPA medication was 2.4 \pm 1.2 years (range: 0.5–3) with 13 of these also receiving SGA, and three receiving VPA, SGA, and lamotrigine concomitantly. Two participants were taking a carbamazepine and SGA combination (olanzapine and aripiprazole); the remaining subject was not on medication.

2.3. MRI scans and image processing

Subjects were scanned using a 1.5T Philips Intera scanner. Axial and coronal T1-weighted images of the whole brain were acquired using 3-D spoiled gradient-recalled echo (SPGR) sequences (TR $\frac{1}{4}$ 15 ms, TE $\frac{1}{4}$ 4.2 ms, FA $\frac{1}{4}$ 201, Matrix $\frac{1}{4}$ 256 \times 256, 150 slices, slice thickness $\frac{1}{4}$ 1 mm, no slice gap, Field-of-View $\frac{1}{4}$ 23 cm, and one signal average). T1-weighted images were preferred due to superior contrast between gray and white matter. Images were transferred to ViewForum post-processing console and processed using Easy Vision CT/MR software (Philips Medical Systems, Eindhoven, The Netherlands) for segmentation of tissue compartments and definition of ROIs. Anatomical T1-weighted 3-D high-resolution coronal images were used for amygdala volume measurements because of clear superior visibility of the borders of the amygdala. The sagittal and axial planes were used as required. The boundaries of the amygdala were outlined manually. To reduce manual tracing errors, the axial T1-weighted images were

magnified four times. The regions of interest (ROIs) were centered to avoid border regions with neighboring structures. The area of interest was determined by combining a thresholding technique with a region-growing algorithm for segmentation, and manual tracing with a mouse-guided cursor. All scans were reviewed by a clinical neuroradiologist to rule out gross pathology.

2.4. Laboratory assays

MRI data and serum samples were acquired from patients when they were euthymic. Euthymia was defined as having a YMRS (Young Mania Rating Scale) and a HAM-D (Hamilton Depression Rating Scale) score below 7.

All subjects underwent blood sample collection between 9 am and 10 am after overnight fasting. BDNF (ChemiKineCYT306, Millipore, Billerica, MA) and NGF (Boster Immunoleader, Pleasanton, CA) levels in serum were measured by sandwich-ELISA, using a commercial kit. After patients gave their blood samples, they underwent an MRI scanning within 24–72 h (Lang et al., 2007).

2.5. Statistical analysis

Statistical analysis was performed using SPSS 15.0 software. Mann Whitney U test and univariate analysis of variance (ANOVA) were employed for continuous variables and chi-square tests for categorical demographic variables. Kolmogorov–Smirnov's test was used for evaluating whether the data for quantitative variables (BDNF, NGF levels, and amygdala volumes) were normally distributed. Pearson's correlations were calculated to determine whether there were any relationships between two variables such as age, treatment duration (only BD group), illness duration (only BD group), BDNF levels, NGF levels, and amygdala volumes. Spearman's correlations were calculated for treatment groups. The correlations between BDNF, NGF levels, and amygdala volumes were also performed after amygdala volumes were normalized to intracranial volume (n. amygdala) to obtain a more precise relationship between serum levels of BDNF and NGF and the volumes of both amygdala. Multiple linear regression analysis was conducted to predict the overall effects on right amygdala volumes. For this purpose, analyses were conducted with serum BDNF levels and duration of treatment in the case group as predictors. The results for both normalized and non-normalized amygdala volumes are presented in order to increase the generalizability of our findings. All statistical tests were two-sided and a p-value of 0.05 was defined as the threshold of significance for all tests.

3. Results

3.1. Demographics, neurotrophic factors, and amygdala volume characteristics

The demographic, clinical, and other characteristics of the 30 subjects with BD and 23 healthy comparison subjects are presented in Table 1. The groups did not differ in terms of demographic variables and amygdala volumes.

Univariate ANOVA with gender as a cofactor revealed that the amygdala (right: $F_{1,27}=0.051$, $df_{1,27}$, $p=0.8$; left: $F_{1,27}=0.267$, $df_{1,27}$, $p=0.6$) and n. amygdala (right: $F_{1,27}=0.163$, $df_{1,27}$, $p=0.7$; left: $F_{1,27}=0.481$, $df_{1,27}$, $p=0.5$) in each hemisphere did not differ significantly in terms of volumes between the groups.

There was a significant difference in right amygdala volume between the subjects with onset before age 15 and the subjects with onset after age 15. Right amygdala volumes in the subjects with onset before age 15 ($1489.0 \pm 7409.9 \text{ mm}^3$) were larger than

Table 1
Clinical demographic characteristics, amygdala volumes of the BD and comparison group.

Characteristics	Bipolar disorder group (n=30)		Healthy comparison group (n=23)		p
	Mean	SD	Mean	SD	
Age	16.37	1.326	16.30	1.105	0.752
Gender					
Male/female	12/18	12/11			0.416
Family history	15				
Onset before 15 Age	17	13			
Duration of disorder (years)	2.25	1.36			
Duration of medications (years)	1.98	1.26			
Follow up period (months)	30	710.3	-		
Total intracranial Volume	11305	7113.0	13521	7124.1	0.914
Amygdala volumes (mm^3)					
Right (mm^3)	1357.4	430.3	2087.71	3080.7	0.342
Left (mm^3)	1353.0	402.3	1452.3	445.0	0.542
N. Amygdala volumes (mm^3)					
Right (mm^3)	0.9	0.3	1.07	0.2	0.3
Left (mm^3)	0.9	0.2	1.07	0.3	0.4

Chi-square (demographic variables), Mann–Whitney-U (continuous variables). ($n=10^3 \text{ cc}^3$).

those with onset after age 15 ($1185.3 \pm 7408.3 \text{ mm}^3$; $p=0.031$). After the volumes of both amygdala were normalized to intracranial volume, there was no difference in right n. amygdala volumes between the subjects with onset before age 15 (1.08 ± 0.2) and the subjects with onset after age 15 (0.8 ± 0.2 ; $p=0.08$).

3.2. Effects of medication on results

The amygdala volumes of the lithium-treated and VPA-treated groups did not differ when compared to other treatment groups. The results of the analysis are presented in Table 2.

3.3. Bivariate correlations

Kolmogorov–Smirnov's test was conducted to evaluate the distribution of quantitative variables. There was no difference from a normal distribution for BDNF levels ($p=0.4$), NGF levels ($p=0.3$), left n. amygdala ($p=0.9$), and right n. amygdala volumes ($p=0.9$).

In the case group, positive correlations between right n. amygdala volumes and serum levels of BDNF ($r=0.745$, $p=0.0001$) and left n. amygdala volumes and serum levels of BDNF ($r=0.681$, $p=0.0001$) were found after performing bivariate analyses (Fig. 1). There was also a positive correlation between total duration of medications and right n. amygdala volumes ($r=0.471$, $p=0.009$) in adolescents with BD.

In the case group, positive correlations between left ($r=0.807$, $p=0.001$) and right ($r=0.748$, $p=0.001$) n. amygdala volumes and serum levels of BDNF and negative correlations between left ($r=0.492$, $p=0.001$) and right ($r=0.602$, $p=0.08$) n. amygdala volumes and age in girls were found. In the case group, positive correlations between NGF and BDNF levels ($r=0.635$, $p=0.026$), total duration of medication and BDNF ($r=0.806$, $p=0.002$) and right n. amygdala volumes and BDNF levels ($r=0.768$, $p=0.004$) in boys were found. In the healthy control group, there were positive correlations between serum levels of BDNF and both the left n. amygdala ($r=0.560$, $p=0.007$) and right n. amygdala ($r=0.640$, $p=0.001$) volumes (Fig. 2). In the healthy group, there was only a positive correlation between right n. amygdala volumes and BDNF levels ($r=0.623$, $p=0.04$) in girls. In the healthy group, there were no significant correlations in boys. There were positive correlations

Table 2 Characteristics Amygdala volumes of the lithium treated and VPA treated groups.	Lithium treated and VPA treated groups. (n:11)	Other group (n:19)	p	VPA treated (n:16)	Other group (n:14)	p
	Mean \pm SD	Mean \pm SD		Mean \pm SD	Mean \pm SD	
Amygdala volumes (mm ³)						
Right	3102.4 \pm 385.7	2920.96 \pm 217.3	0.237	2941.4 \pm 208.5	3040.2 \pm 376.5	0.430
Left	2918.5 \pm 405.2	2923.08 \pm 367.3	0.753	2955.4 \pm 375.6	2882.5 \pm 383.7	0.747
Right	0.9 \pm 0.2	1.05 \pm 0.3	0.287	1.0 \pm 0.3	0.9 \pm 0.2	0.697
Left	0.8 \pm 0.2	1.06 \pm 0.2	0.158	1.03 \pm 0.3	0.9 \pm 0.2	1
Total intracranial Volume	13677 \pm 114	13489 \pm 114	0.832	13416 \pm 111	13719 \pm 116	0.533

Mann-Whitney-U (continuous variables) (10^{-3} cc^3).

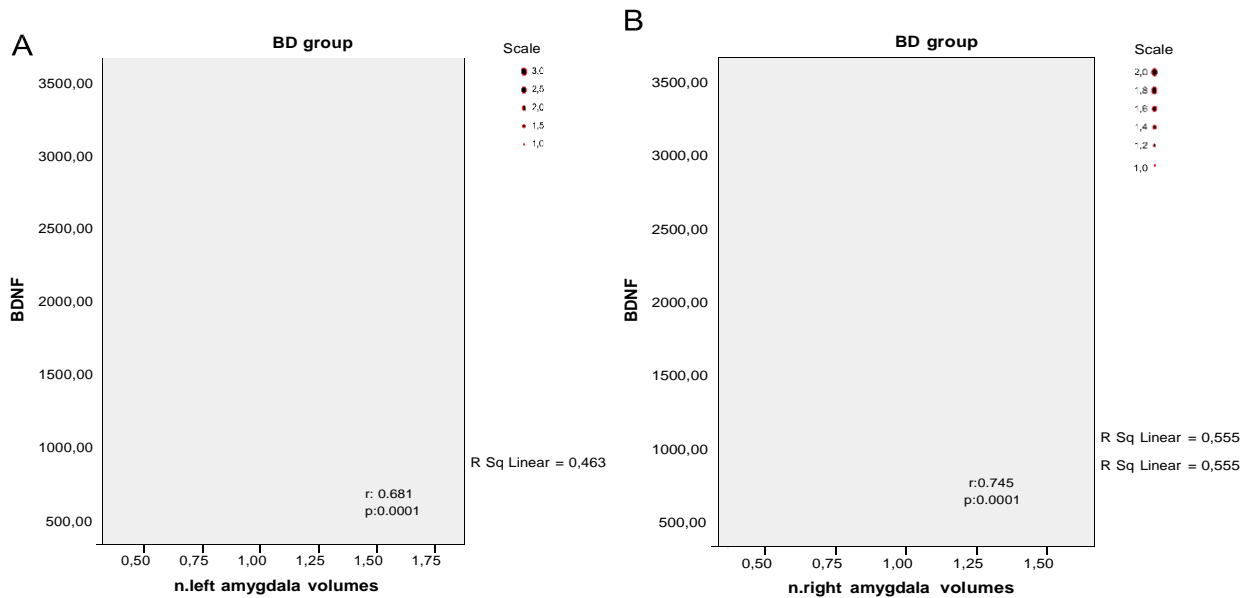


Fig. 1. The correlations between the normalized right and left amygdala volumes and BDNF levels in the BD group.

between duration of medication and both the NGF ($r = 0.486$, $p = 0.006$) and BDNF levels ($r = 0.479$, $p = 0.007$) in the patient group.

3.4. Multiple linear regression analyses

To examine the effects of multiple predictors (age, gender, total duration of disorder and total duration of medication, and BDNF) on dependent variable (amygdala volumes), multiple linear regression testing was performed to examine the overall effects of BDNF and the duration of medication on right amygdala volumes. When the linear combinations of two variables were examined, the BDNF levels significantly predicted an increase in right n. amygdala volumes ($B = 0.0001$, $t = 5.9$, $p = 0.0001$).

3.5. Bivariate correlations in lithium-treated and VPA-treated groups

There was only a positive correlation between serum BDNF levels and left n. amygdala volumes in the lithium-treated group (Spearman's $r = 0.555$, $p = 0.07$) and a negative correlation between left n. amygdala volumes and follow-up duration (Spearman's $r = -0.647$, $p = 0.03$).

There were positive correlations between right n. amygdala volumes and serum levels of BDNF (Spearman's $r = 0.776$, $p = 0.0001$), and left amygdala volumes and serum levels of BDNF (Spearman's $r = 0.609$, $p = 0.012$) in the VPA-treated group. Right n.

amygdala volumes were positively correlated with duration of medication (Spearman's $r = 0.506$, $p = 0.045$) in the VPA-treated BD group. There were positive correlations between duration of medication and both the NGF ($r = 0.580$, $p = 0.018$) and BDNF levels ($r = 0.503$, $p = 0.047$) in the VPA-treated group.

4. Discussion

One of the main findings of this study was that there were no significant differences between the right and left amygdala volumes when we compared patients with BD and the healthy control group. We also aimed at evaluating the long-term effects of disorder, age, and treatment on the decrease or increase in amygdala volumes and the significance of this effect; whether there is any relationship between these variables and neurotrophins that act on brain plasticity. For this reason, we conducted bivariate correlation analyses and found a strong positive correlation between serum BDNF levels and both the right and left n. amygdala volumes in the BD group and the healthy control group. According to additional multivariate analyses, only the serum level of BDNF significantly loaded the increase in right n. amygdala volumes in the patient group.

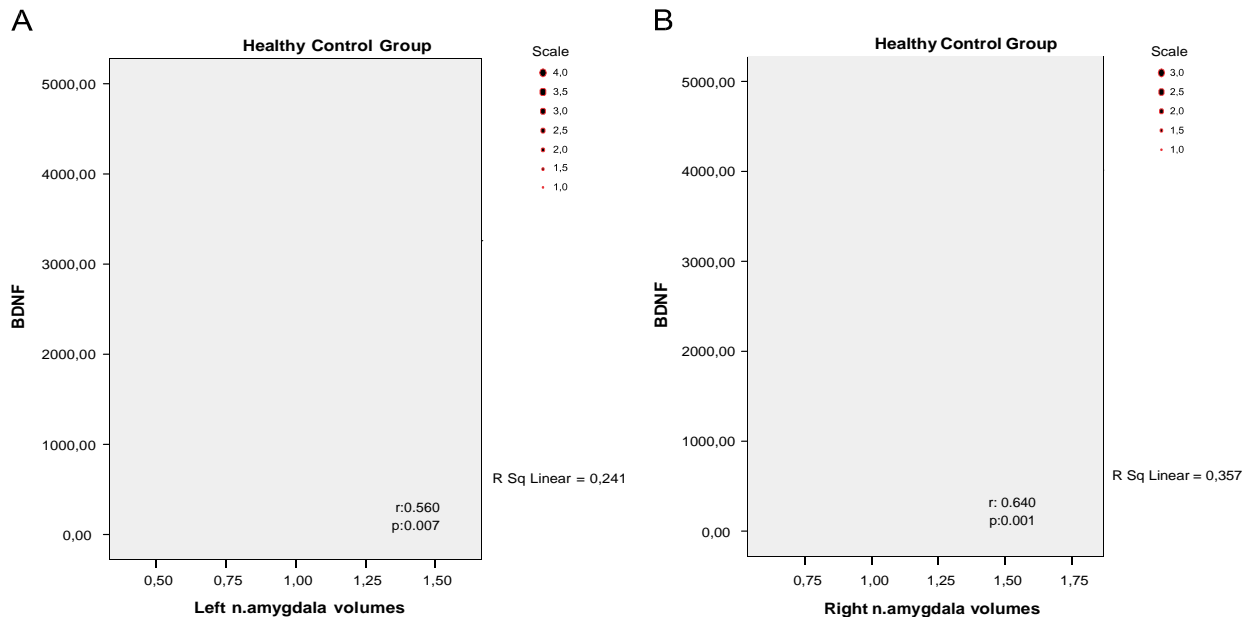


Fig. 2. The correlations between the normalized right and left amygdala volumes and BDNF levels in the healthy control group.

Meta-analysis of structural MRI studies of amygdala volumes in adult BD patients have shown that the amygdala volume increases or is unchanged in adult BD patients in comparison with controls (McDonald et al., 2004; Hajek et al., 2009; Pfeifer et al., 2008). On the other hand, significantly reduced amygdala volumes have been shown in children and adolescents with BD (Hajek et al., 2009; Pfeifer et al., 2008). In this study, neither an increase nor a decrease was seen in amygdala volumes. We suggest that this might be due to the presence of a mixed BD group from heterogeneous neurodevelopmental levels. The BD and healthy groups consisted of adolescents aged between 13–17 years having heterogeneous neurodevelopmental stages. We consider that age-related changes in BDNF and NGF levels may occur due to these different stages. In a study evaluating the age-related changes in serum BDNF levels in healthy individuals, serum BDNF levels within the first 10 years were same as in the 30–39 years age group, which is accepted as the adult level. However, BDNF levels started to decrease significantly within 10–19 years after reaching the adult level (Kato-Semba et al., 2007). Experimental studies have shown an age-dependent decrease in the levels of NGF and BDNF in rats (Perovic et al., 2013). For this reason, our sample was divided into two groups depending on whether the age at onset was before or after 15 years. Another interesting finding was that the right amygdala volumes were significantly increased in the BD group with onset before 15 years of age compared to the group with onset after the age of 15, but this effect disappeared after the amygdala volumes were normalized to total brain volume. Taking into account the findings of our study along with those of previous data on the relationship between the duration of the disorder, medication, and an increase in amygdala volume via neurotrophins in BD, the correlation between BDNF and amygdala volumes might be considered as a potential neurobiological marker, although the specificity of these markers is still questionable.

Although BD is clearly not a classical neurodegenerative disorder, increasing evidence has shown that it is accompanied by regional brain volumetric decreases and cellular atrophy/loss. Furthermore, a considerable amount of evidence suggests that aberrations in the regulation of neurotrophic signaling play a role in the pathophysiology of BD, and certainly appear to be relevant targets for the actions of mood stabilizers (Shaltiel et al., 2007).

Recently, it has been shown that chronic treatment with either of the mood-stabilizers lithium or VPA increases BDNF immunoreactivity in the rat frontal cortex, an effect that might enhance synaptic plasticity related to BDNF. These findings could also explain the therapeutic response to mood stabilizers, as BDNF exerts its neurotrophic (and putatively therapeutic) effects (Einat et al., 2003; Fukumoto et al., 2001). We found positive correlations between the total duration of medication and serum levels of BDNF and NGF. There were strong positive correlations between both the right and left amygdala volumes and serum levels of BDNF in the combined patient group and the VPA-treated group. On the other hand, there was a positive correlation between serum BDNF levels and only left amygdala volumes in the lithium-treated group. Our data might suggest that lithium and VPA are the major mood-stabilizing drugs for the treatment of BD. When administered in therapeutically relevant paradigms, they regulate neurotrophic signaling cascades and BDNF and probably NGF are two of the major targets for mood stabilizers (Shaltiel et al., 2007). Most of our cases were administered various typical antipsychotics at the same time and for a longer duration. For that reason, a similar mechanism might be valid for these groups of medications. Further controlled studies with larger sample sizes are needed for more reliable results.

After multivariate analysis, the serum levels of BDNF significantly loaded the increase in right n.amygdala volumes in the case group. Additionally, the serum levels of BDNF positively correlated with the left and right n.amygdala volumes in the healthy control group. According to a prospective longitudinal study comparing amygdala neurodevelopment among adolescents following their first manic episode, the left amygdala volume was found to increase over time in healthy adolescents and but not in adolescents with BD approximately 12 months after their first episode. While most studies in adults with BD have shown that amygdala volume increases, Bitter et al. (2011) reported amygdala volume reductions in children and adolescents with BD. Our findings suggest a positive correlation between serum BDNF levels and amygdala volumes in patients with significant past exposure to mood stabilizers. They might provide a further understanding of

the mood stabilizing effects of these medications in BD. One explanation for the correlations between differences in amygdala volumes and BDNF levels might be related to differences in medication among study groups. Although both left and right amygdala volumes were positively correlated with BDNF levels in the VPA group, only the left amygdala volumes positively correlated with BDNF levels in the lithium group. Assuming that all patients were in a euthymic state, these findings demonstrate that the correlation between amygdala volume and BDNF levels in the course of this illness might be potentially useful as a marker of treatment response or a prognostic indicator of clinical outcome.

Correlations between serum BDNF levels and both amygdala volumes were a common finding in both the healthy control and the BD group. Additionally, when we divided the case group into VPA and lithium treatment groups, the same correlation was observed in these two groups. According to multivariate analysis, only the serum levels of BDNF significantly loaded the increase in right amygdala volumes in the BD group. By contrast, the left amygdala volume increased over time in healthy adolescents (Bitter et al., 2011), and gray matter reductions were found in the left amygdala in children and adolescents with BD (Dickstein et al., 2005). In particular, unipolar inpatients have significantly larger left amygdala volumes. Children and adolescents with BD showed decreased left amygdala volumes, whereas patients aged ≥ 20 years showed a trend towards larger left amygdala volumes (Hajek et al., 2009). The direct correlation between left amygdala volumes and age in patients with BD, and the inverse correlation between age and left amygdala volumes in healthy control subjects might reflect an abnormal developmental mechanism in BD (Chen et al., 2004). Exposure to lithium or VPA treatment appeared to confer protection against volume decreases only in the left amygdala (Chang et al., 2005). One possibility is that volume protection in the right amygdala of the cases reported here occurs as a result the effects of lithium, VPA or other psychotropic medications via BDNF. Evidence from other studies suggests that the left amygdala might be specifically vulnerable to loss or treatment effects. Psychotropic medications may affect the brain differently during different stages of development. For this reason, further longitudinal studies across the entire developmental process in children and adolescents are needed to determine whether variations in the left and right amygdala might be an early neuromarker for diagnosis and/or treatment response.

Previous studies of amygdala volume in patients with diagnosed BD show marked differences depending on the age of the participants—older patients had volumes that were larger or not different from controls, whereas the amygdala were smaller in children and adolescents with the illness (Hajek et al., 2009; Pfeifer et al., 2008; McDonald et al., 2004). We propose that amygdala volume is reduced at the onset of the disease and would increase with age. The reason is unclear, although the present study investigated people at ultra-high risk (UHR) of developing BD, indicating that amygdala reductions are related to the pre-morbid phase of the illness (Bechdolf et al., 2012). The observed structural abnormality in the brains of patients with BD has been related to abnormal BDNF function in the euthymic state, suggesting an especially important role for BDNF in the treatment of BD. Therefore, the observed positive correlations between amygdala volumes and BDNF levels, and between BDNF levels and duration of treatment, may be typical for a treatment-related process. Longitudinal studies of patients receiving a structured treatment protocol if performed with a second MRI scan after at least 5 or more years might confirm this hypothesis.

The childhood and adolescence-onset BD group is an appropriate and special group as it reflects the early neurodevelopmental period of the illness, as well as the fact that long-term medication effects have not yet been observed. Follow-up studies

with larger sample sizes of children and adolescents with BD are required to resolve the influences of development and medication on brain structures over time. Since all our BD patients were in a euthymic state, this study also allowed us to determine the state-trait plasticity of the amygdala.

5. Limitations

Although we had a homogeneous and convenient group of patients to study and a good knowledge of their follow-up, this present study had some limitations. This was a cross-sectional study and therefore could not reveal treatment-induced prospective longitudinal changes in the brain structure of the subjects. Different durations for exposure to lithium and VPA in addition to polypharmacy, using many atypical antipsychotics, might have led to different effects on the brain structures. We enlarged the sample size after preliminary results and although the sample size was comparable with the many published structural MRI studies of early BD, studies with larger sample sizes are needed for more reliable results. Further controlled and longitudinal studies are needed to determine the structural and neurotrophic correlates associated with clinical and/or functional differences in children and adolescents with BD.

Role of funding source

This study was supported by the Dokuz Eylul University Foundation of Scientific Research Projects (BAP) and was partly supported by the Research Support Award-2008 of the ISBD-affiliated Society for Bipolar Disorders-Turkey.

Conflict of interest

Drs Inal-Emiroglu FN, Karabay N, Resmi H, Guleryuz H, Baykara B, Alsen S, Senturk-Pilan B, Kose S have no potential conflict of interest. Dr Akay is member of scientific council of Janssen Cilag and Lilly drug companies in Turkey.

Acknowledgments

This study was supported by Dokuz Eylul University Foundation, Scientific Research Projects (BAP) (Project number: 2009.KB.SAG.066) was partly supported by Research Support Award-2008 by the ISBD affiliated Society for Bipolar Disorders-Turkey. We would like to thank to Dr. Ellen Leibenluft and Dr. Ali Saffet Gonul for their editorial contributions, and Dr. Hulya Ellidokuz and Dr. Ahmet Topuzoglu for their help during statistical analysis.

References

- Berry, A., Bindocci, E., Alleva, E., 2012. NGF, brain and behavioral plasticity. *Neural Plast.* 16.
- Barbosa, I.G., Huguet, R.B., Neves, F.S., Reis, H.J., Bauer, M.E., Janka, Z., Palotás, A., Teixeira, A.L., 2011. Impaired nerve growth factor homeostasis in patients with bipolar disorder. *World J. Biol. Psychiatry* 12, 228–232.
- Bechdolf, A., Wood, S.J., Nelson, B., Velakoulis, D., Yücel, M., Takahashi, T., Yung, A.R., Berk, M., Wong, M.T., Pantelis, C., McGorry, P.D., 2012. Amygdala and insula volumes prior to illness onset in bipolar disorder: a magnetic resonance imaging study. *Psychiatry Res. Neuroimaging* 201, 34–39.
- Blumberg, H.P., Fredericks, C., Wang, F., Kalmár, J.H., Spencer, L., Papademetris, X., Pittman, B., Martin, A., Peterson, B.S., Fulbright, R.K., Krystal, J.H., 2005. Preliminary evidence for persistent abnormalities in amygdala volumes in adolescents and young adults with bipolar disorder. *Bipolar Disord.* 7, pp. 570–576.
- Bitter, S.M., Mills, N.P., Adler, C.M., Strakowski, S.M., DelBello, M.P., 2011. Progression of amygdala volumetric abnormalities in adolescents following their first manic episode. *J. Am. Acad. Child Adolesc. Psychiatry* 50, 1017–1026.
- Chen, B.K., Sassi, R., Axelson, D., Hatch, J.P., Sanches, M., Nicoletti, M., Brambilla, P., Keshavan, M.S., Ryan, N.D., Birmaher, B., Soares, J.C., 2004. Cross-sectional study of abnormal amygdala development in adolescents and young adults with bipolar disorder. *Biol. Psychiatry* 56, 399–405.
- Chang, K., Karchemskiy, A., Barnea-Goraly, N., Garrett, A., Simeonova, D.I., Reiss, A., 2005. Reduced amygdala gray matter volume in familial pediatric bipolar disorder. *J. Am. Acad. Child Adolesc. Psychiatry* 44, 565–573.
- Dickstein, D.P., Milham, M.P., Nugent, A.C., Drevets, W.C., Charney, D.S., Pine, D.S., Leibenluft, E., 2005. Frontotemporal alterations in pediatric bipolar disorder: results of a voxel-based morphometry study. *Arch. Gen. Psychiatry* 62, 734–741.

- Einat, H., Yuan, P., Gould, T.D., Li, J., Du, J., Zhang, L., Manji, H.K., Chen, G., 2003. The role of the extracellular signal-regulated kinase signaling pathway in mood modulation. *J. Neurosci.* 23, 7311–7316.
- Fukumoto, T., Morinobu, S., Okamoto, Y., Kagaya, A., Yamawaki, S., 2001. Chronic lithium treatment increases the expression of brain-derived neurotrophic factor in the rat brain. *Psychopharmacology* 158, 100–106.
- Fernandes, B.S., Gama, C.S., Ceresér, K.M., Yatham, L.N., Fries, G.R., Colpo, G., De Lucena, D., Kunz, M., Gomes, F.A., Kapczinski, F., 2011. Brain-derived neurotrophic factor as a state-marker of mood episodes in bipolar disorders: a systematic review and meta-regression analysis. *J. Psychiatr. Res.* 45, 995–1004.
- Gökler, B., Ünal, F., Pehlivanürk, B., Çengel-Kültür, E., Akdemir, D., Taner, Y., 2004. Reliability and validity of schedule for affective disorders and schizophrenia for school age children present and lifetime version-Turkish version (K-SADS-PL-T). *Çocuk ve Gençlik Ruh Sağlığı Dergisi* 11 (3), 109–116.
- Hajek, T., Kopecek, M., Kozeny, J., Gunde, E., Alda, M., Höschl, C., 2009. Amygdala volumes in mood disorders—meta-analysis of magnetic resonance volumetry studies. *J. Affect. Disord.* 115, 395–410.
- Hashimoto, K., 2010. Brain-derived neurotrophic factor as a biomarker for mood disorders: an historical overview and future directions. *Psychiatry Clin. Neurosci.* 64, 341–357.
- Inal-Emiroglu, F.N., Baykara, B., Miral, S., 2008. A case series of Turkish children and adolescents with bipolar spectrum disorder: a naturalistic clinical phenomenological follow-up. *Minerva Pediatr.* 60, 51–57.
- Kalmar, J.H., Wang, F., Chepenik, L.G., Womer, F.Y., Jones, M.M., Pittman, B., Shah, M.P., Martin, A., Constable, R.T., Blumberg, H.P., 2009. Relation between amygdala structure and function in adolescents with bipolar disorder. *J. Am. Acad. Child Adolesc. Psychiatry* 48, 636–642.
- Katoh-Semba, R., Wakako, R., Komori, T., Shigemi, H., Miyazaki, N., Ito, H., Kumagai, T., Tsuzuki, M., Shigemi, K., Yoshida, F., Nakayama, A., 2007. Age-related changes in BDNF protein levels in human serum: differences between autism cases and normal controls. *Int. J. Dev. Neurosci.* 25, 367–372.
- Lang, U.E., Hellweg, R., Seifert, F., Schubert, F., Gallinat, J., 2007. Correlation between serum brain-derived neurotrophic factor level and an in vivo marker of cortical integrity. *Biol. Psychiatry* 62, 530–535.
- Lin, P.Y., 2009. State-dependent decrease in levels of brain-derived neurotrophic factor in bipolar disorder: a meta-analytic study. *Neurosci. Lett.* 466, 139–143.
- McDonald, C., Zanelli, J., Rabe-Hesketh, S., Ellison-Wright, I., Sham, P., Kalidindi, S., Murray, R.M., Kennedy, N., 2004. Meta-analysis of magnetic resonance imaging brain morphometry studies in bipolar disorder. *Biol. Psychiatry* 56, 411–417.
- Ohgoh, M., Kimura, M., Ogura, H., Katayama, K., Nishizawa, Y., 1998. Apoptotic cell death of cultured cerebral cortical neurons induced by withdrawal of astroglial trophic support. *Exp. Neurol.* 149, 51–63.
- Pallavi, P., Sagar, R., Mehta, M., Sharma, S., Subramaniam, A., Shamshi, F., Sengupta, U., Qadri, R., Pandey, R.M., Mukhopadhyay, A.K., 2013. Serum neurotrophic factors in adolescent depression: gender difference and correlation with clinical severity. *J. Affect. Disord.* 150, 415–423.
- Perovic, M., Tesic, V., Mladenovic Djordjevic, A., Smiljanic, K., Loncarevic-Vasiljkovic, N., Ruzdijic, S., Kanazir, S., 2013. BDNF transcripts, proBDNF and proNGF, in the cortex and hippocampus throughout the life span of the rat. *Age* 35, 2057–2070.
- Pfeifer, J.C., Welge, J., Strakowski, S.M., Adler, C.M., DelBello, M.P., 2008. Meta-analysis of amygdala volumes in children and adolescents with bipolar disorder. *J. Am. Acad. Child Adolesc. Psychiatry* 47, 1289–1298.
- Rajkowska, G., 2002. Cell pathology in bipolar disorder. *Bipolar Disord.* 4, 105–116.
- Shaltiel, G., Chen, G., Manji, H.K., 2007. Neurotrophic signaling cascades in the pathophysiology and treatment of bipolar disorder. *Curr. Opin. Pharmacol.* 7, 22–26.
- Sendtner, M., Pei, G., Beck, M., Schweizer, U., Wiese, S., 2000. Developmental motoneuron cell death and neurotrophic factors. *Cell Tissue Res.* 301, 71–84.
- Wilke, M., Kowatch, R.A., DelBello, M.P., Mills, N.P., Holland, S.K., 2004. Voxel-based morphometry in adolescents with bipolar disorder: first results. *Psychiatry Res.* 131, 57–69.